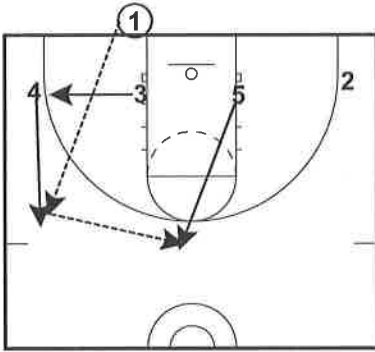
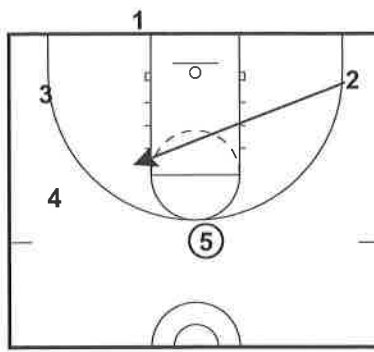


Baseline OB

Play 12
Half Court Offense



Play 12
Half Court Offense

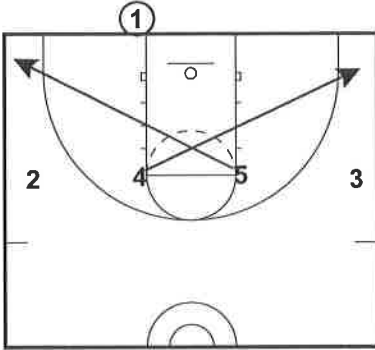


Play 12
Half Court Offense



Baseline OB

Play 13
Half Court Offense

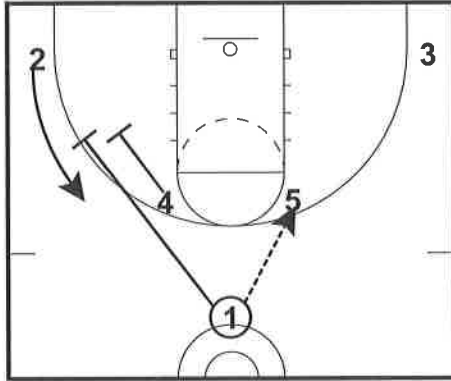


Play 13
Half Court Offense

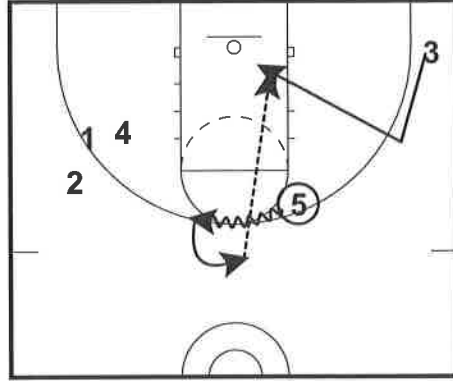


Half Court

Play 9
Half Court Offense



Play 9
Half Court Offense



Half Court

Play 8
Half Court Offense

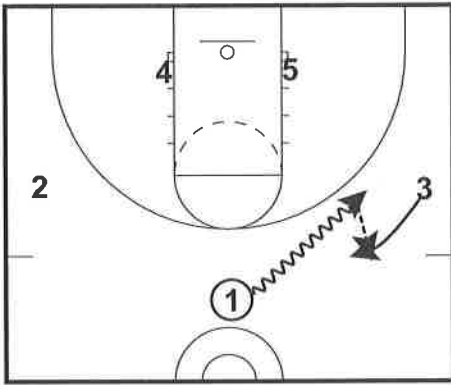


Play 8
Half Court Offense

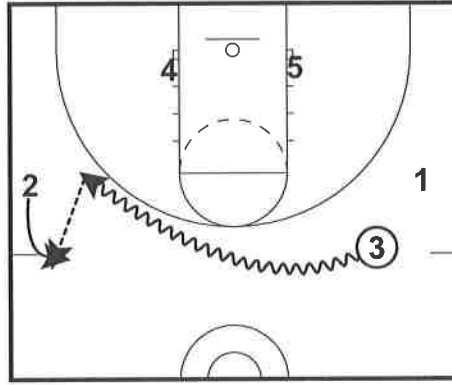


Half Court

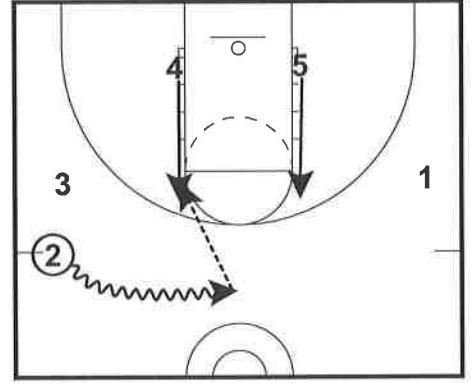
Play 5
Half Court Offense



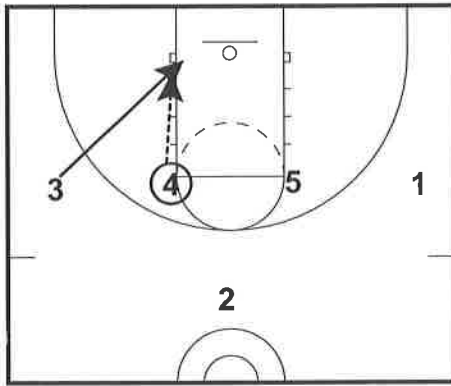
Play 5
Half Court Offense



Play 5
Half Court Offense

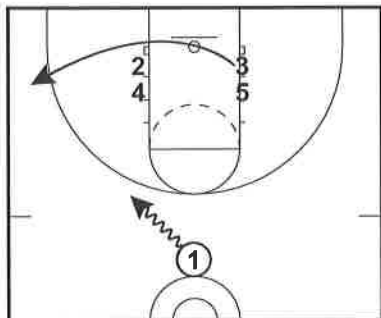


Play 5
Half Court Offense



Half Court

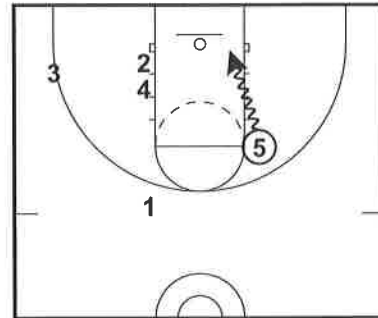
Play 3
Half Court Offense



Play 3
Half Court Offense

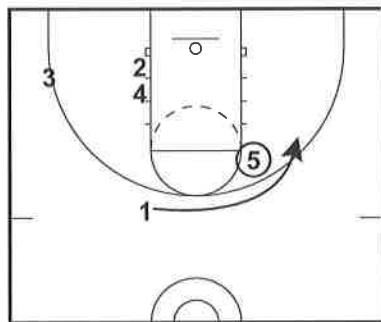


Play 3
Half Court Offense



Option: Catch at the elbow and go 1-1

Play 3
Half Court Offense



Option: 1 follows the pass for a hand off.

Half Court

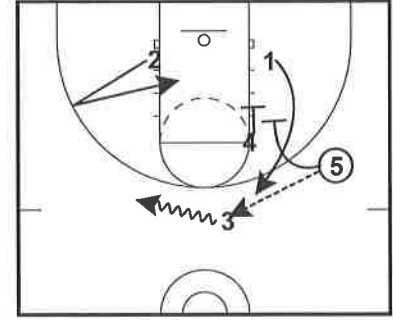
Play 1
Half Court Offense



Play 1
Half Court Offense



Play 1
Half Court Offense



Play 1
Half Court Offense



LSU OFFENSE VERSUS BOX AND ONE DEFENSE

Diagram 1:

The initial alignment will be a 2-1-2. 2 in the diagrams is the player being guarded man-to-man.

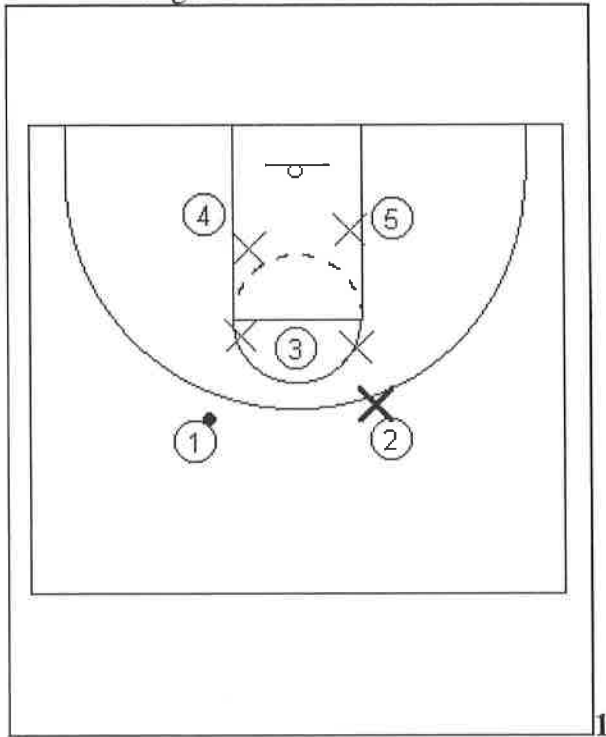


Diagram 2:

1 goes to a dribble until picked up by the defense. Meanwhile, 3 screens for 2 who cuts down the middle. 4 and 5 will step out on the baseline to bring the defense out and open the middle up for cutters. 4 can take a pass for a shot if open or a look to drive or pass to 2 on his cut.

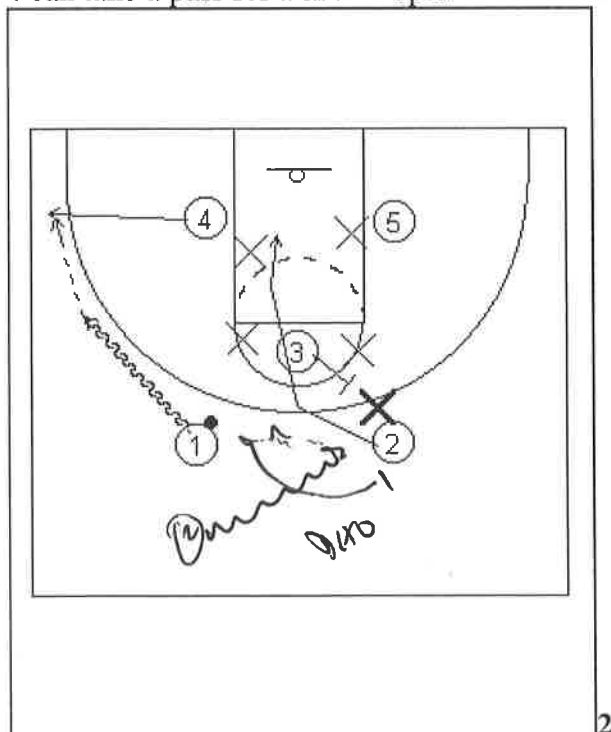


Diagram 10:

If none of the options is there, 3 and 5 will replace each other and 1 will now break around 2 for a hand off or short pass and possible jump shot.