

# Tom Billeter Augustana Men's Basketball

## Triangle and 2 Defense

### Key

X = Triangle Defenders

M1 = Defender guarding best offensive player

M2 = Defender guarding second best offensive player

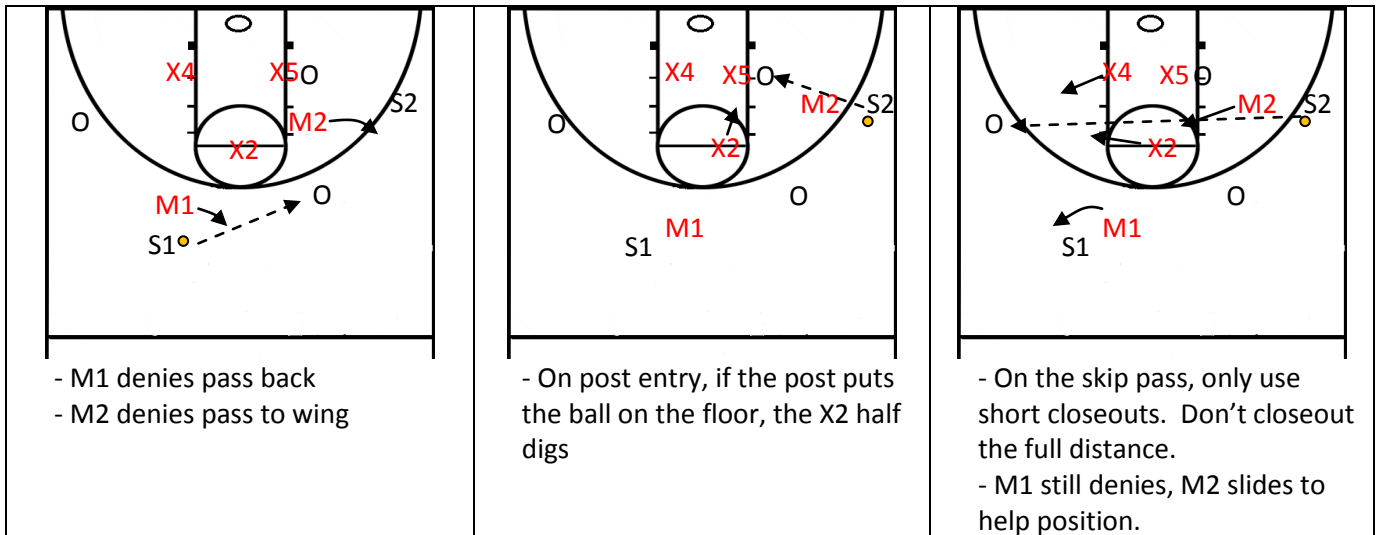
O = Offensive Players not being guarded by man defenders

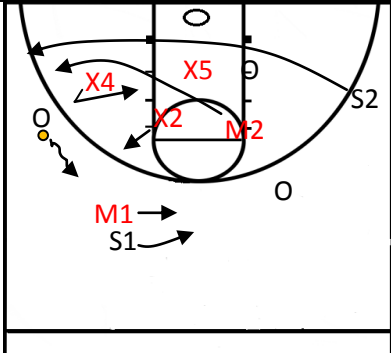
S1 = Best offensive player

S2 = Second best offensive player

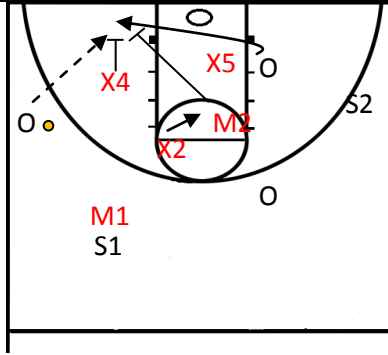
### Notes

- Put worse help defender (M1) on the other team's best offensive player (S1). This defender is always making contact with the best, denying passes, and never playing help defense. Try to get in the offensive player's head.
- Second man defender (M2) plays regular man defense and gives help.
- Post players always play behind the post.
- No dribble penetration or passes to the paint.
- Do not deny the other 3 players.
- Switch ball screens

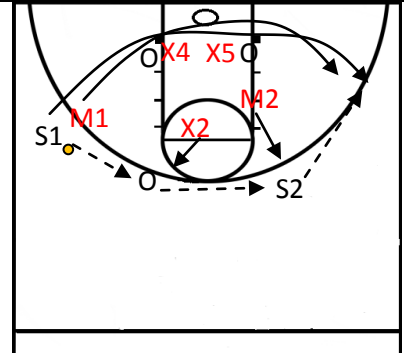




- If they send a baseline runner, M2, goes with the cutter
- X4 will pass dribble to X2 playing gap defense
- M1 stays with S1



- Trap ALL short corner entries



- Double baseline screens for shooter
- M1 tags and trails the shooter