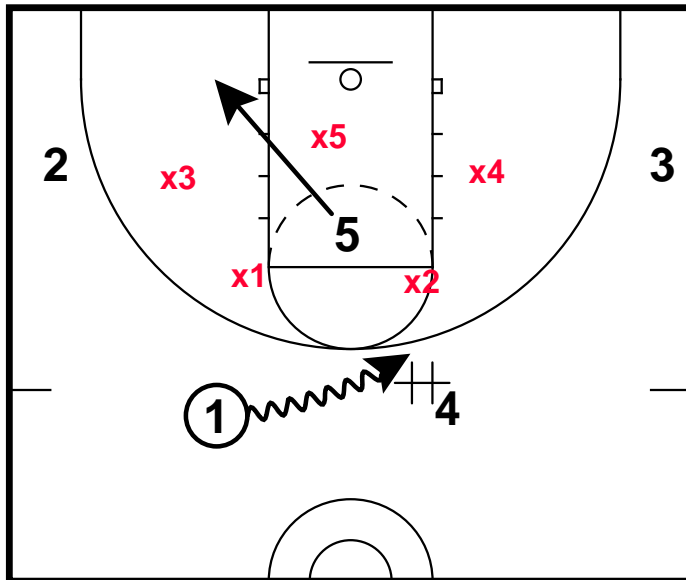


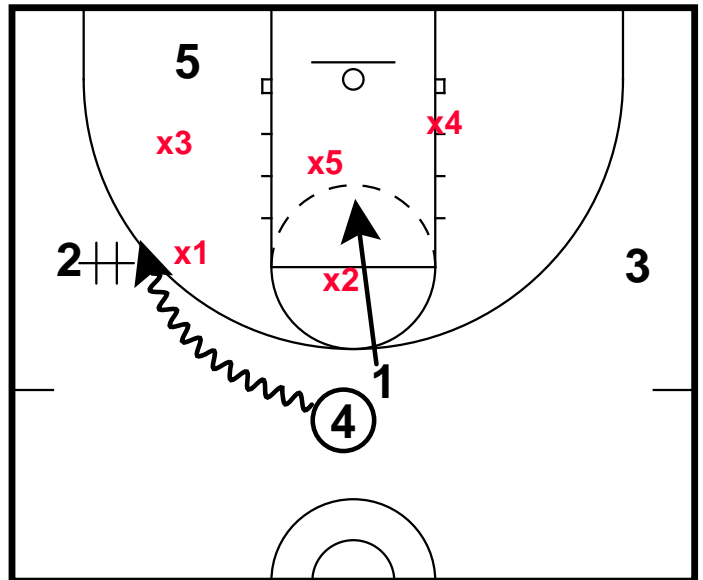
Zone Sets: Weave Flare

Frame 1



1 dribble hand off to 4

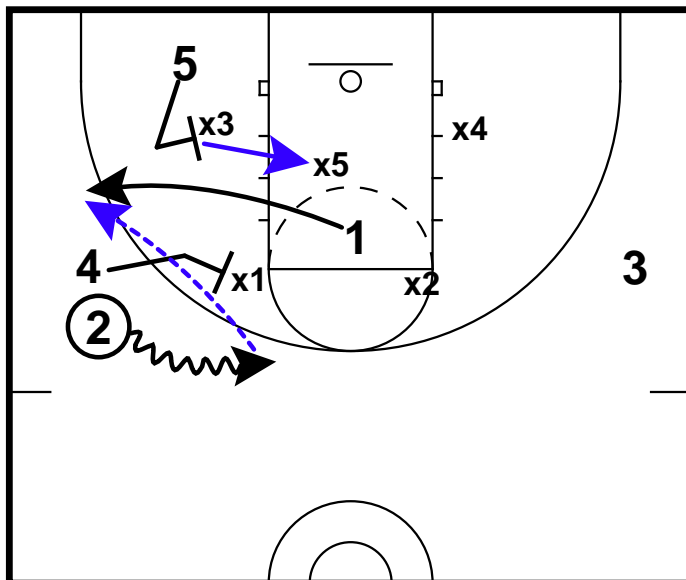
Frame 2



1 cuts to the middle of the lane

4 dribble hand off to 2

Frame 3



2 dribbles towards the top of the key

4 screens the top defender in the zone

5 screens the outside bottom defender

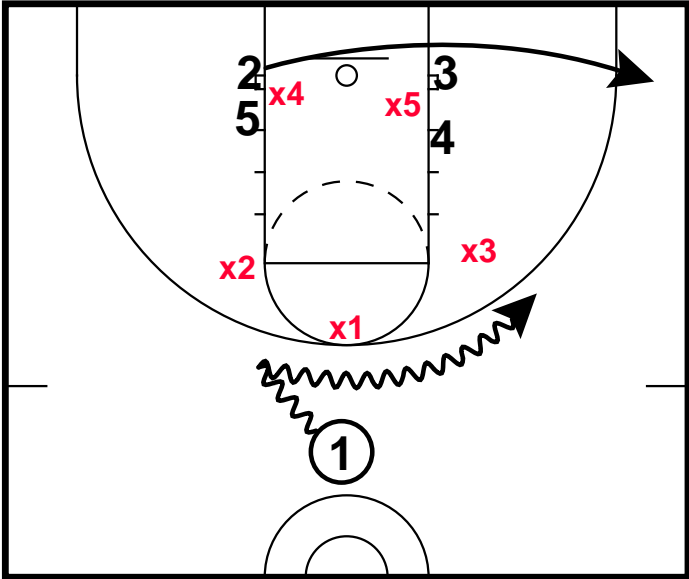
1 cuts to the wing

2 throws back to 1

*** If no shot, 5 seals the middle defender in the zone for a post entry pass

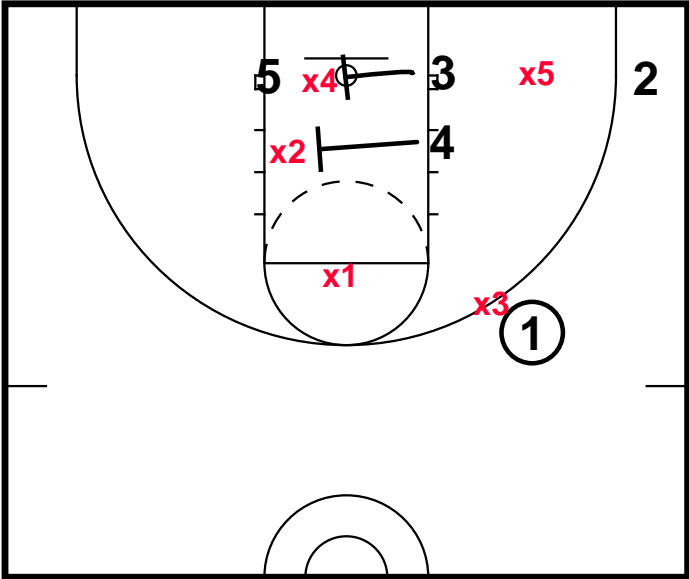
Arkansas

Frame 1



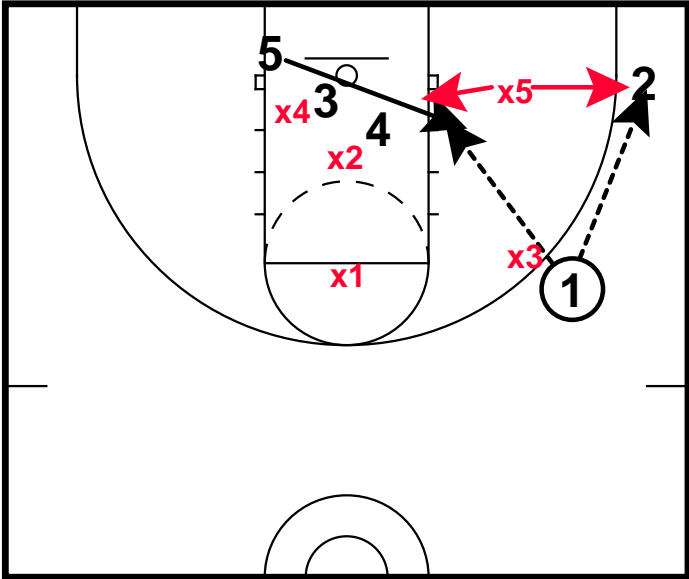
1 starts left, then reverses dribble right to engage x3. 2 uses double to corner.

Frame 2



When 2 clears, 3 and 4 screen x2 and x4

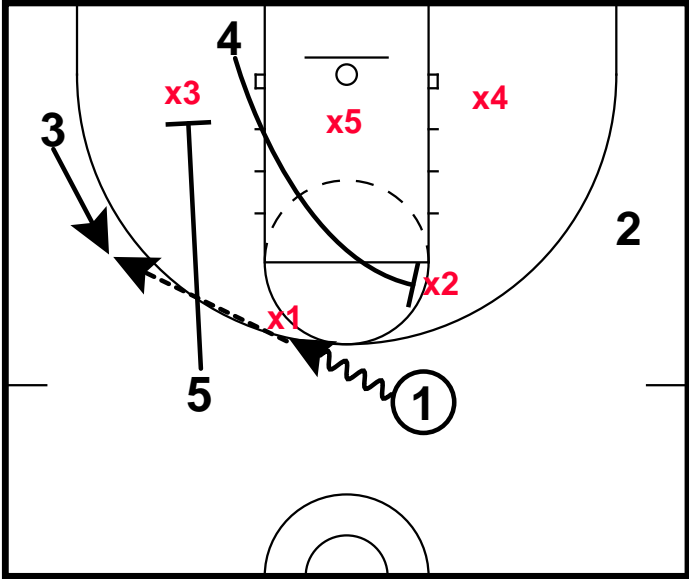
Frame 3



5 flashes under the double. x5 must choose to cover the corner or stay home.

Bama

Frame 1



4 ball screens the inside of the top defender (x2). This forces x1 to guard the ball.

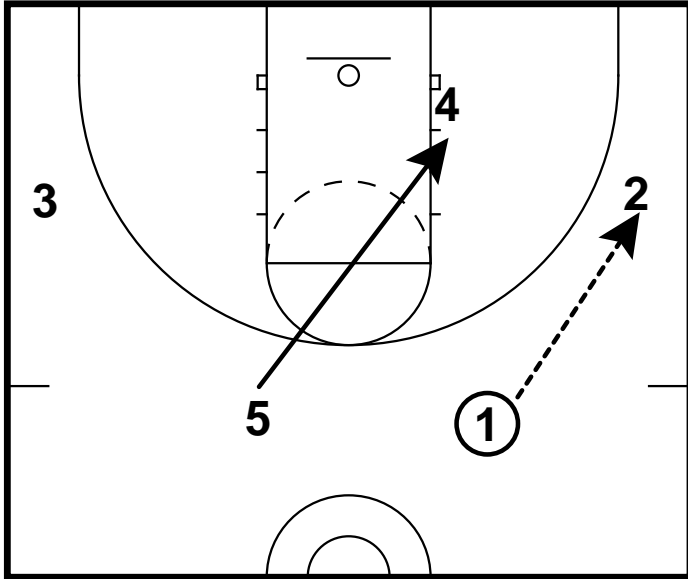
5 sets a pin down on x3.

5 goes after 4 starts his movement through the lane.

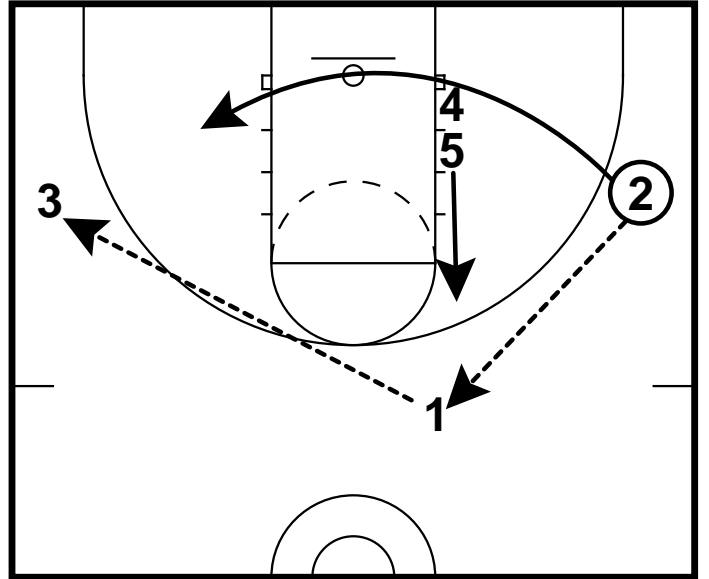
3 cuts up on 1's bounce.

Berlin

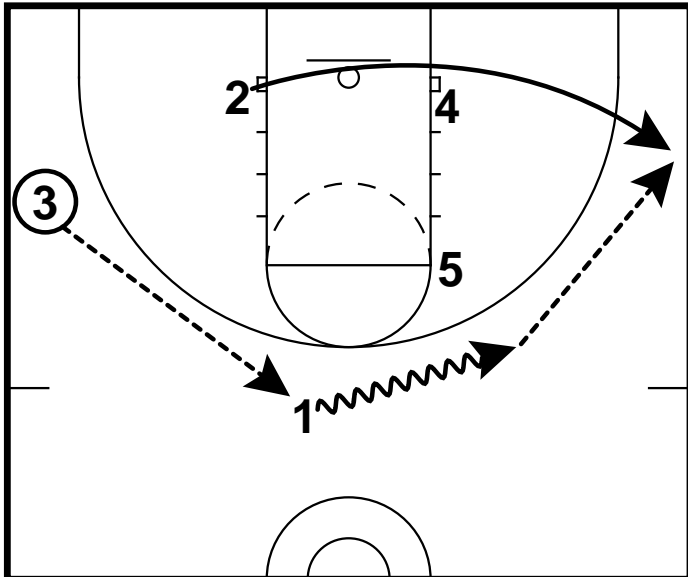
Frame 1



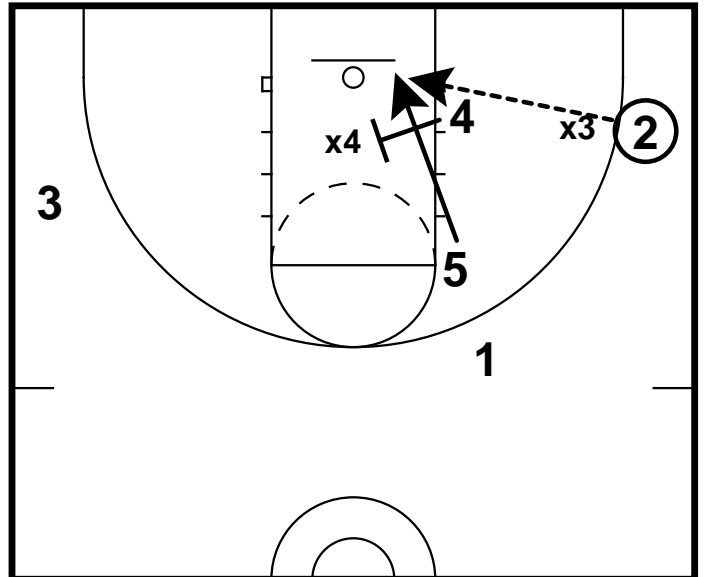
Frame 2



Frame 3

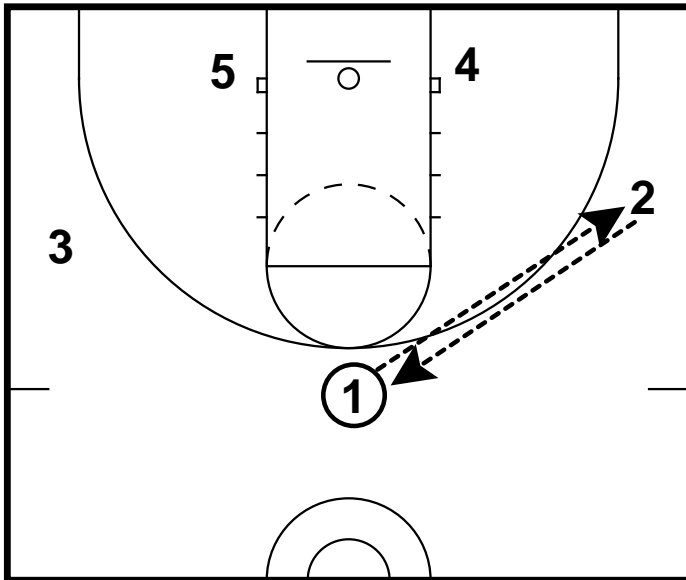


Frame 4

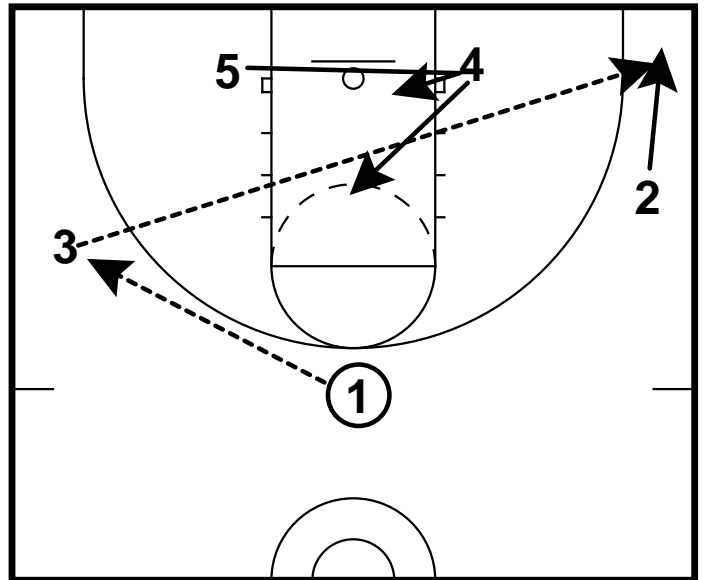


Crack with corner 3 (mid tenn)

Frame 1

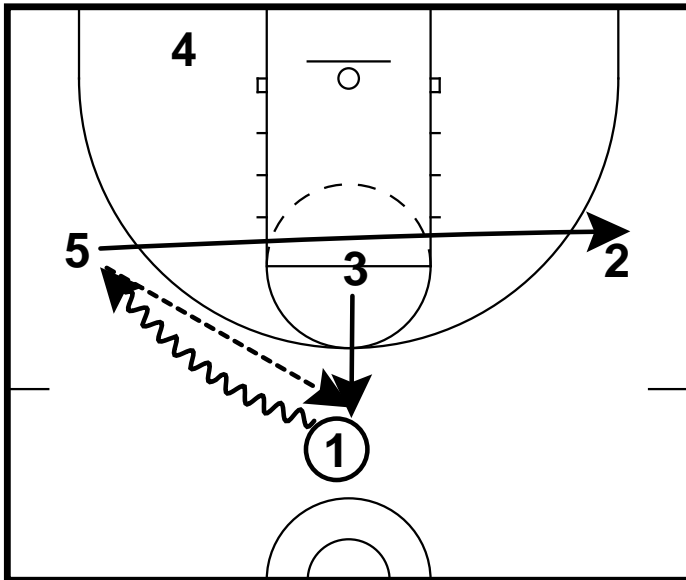


Frame 2

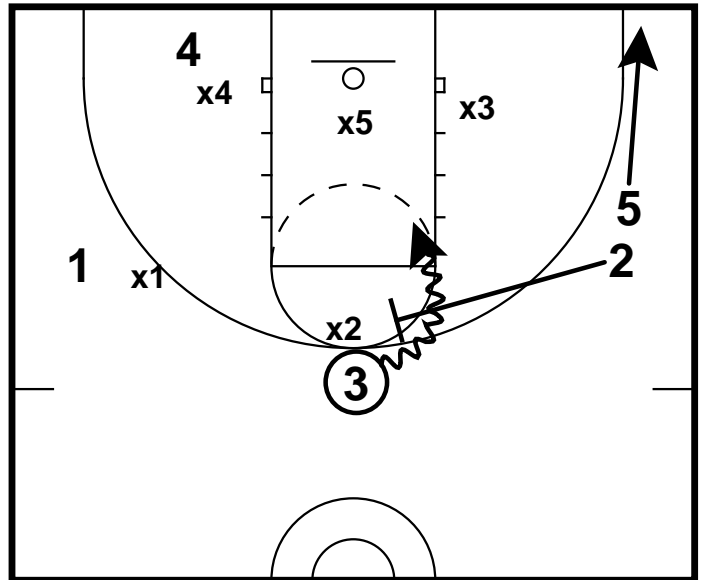


Shallow

Frame 1

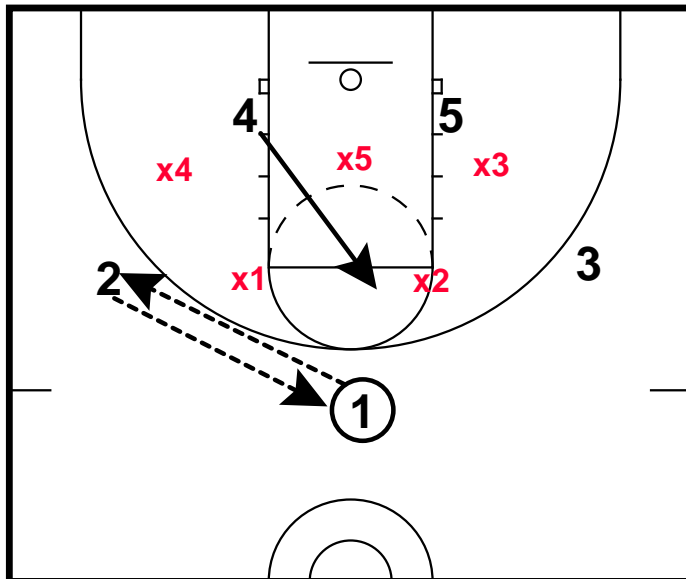


Frame 2



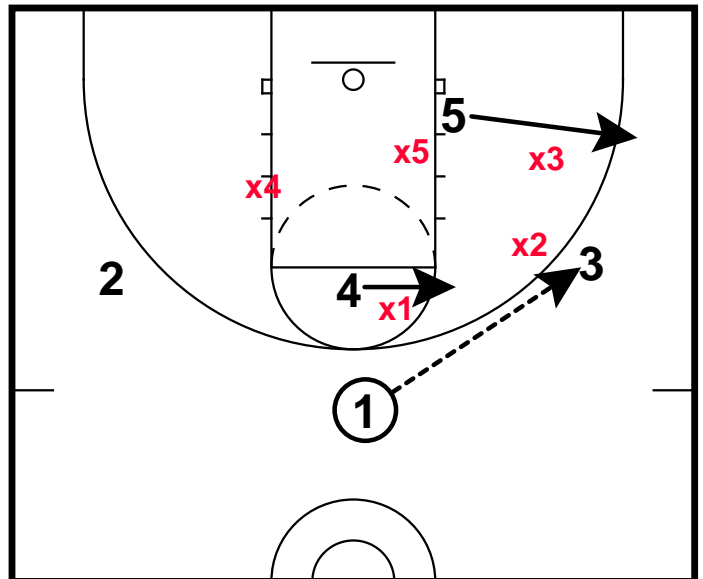
Zone Sets: Lob Fire

Frame 1



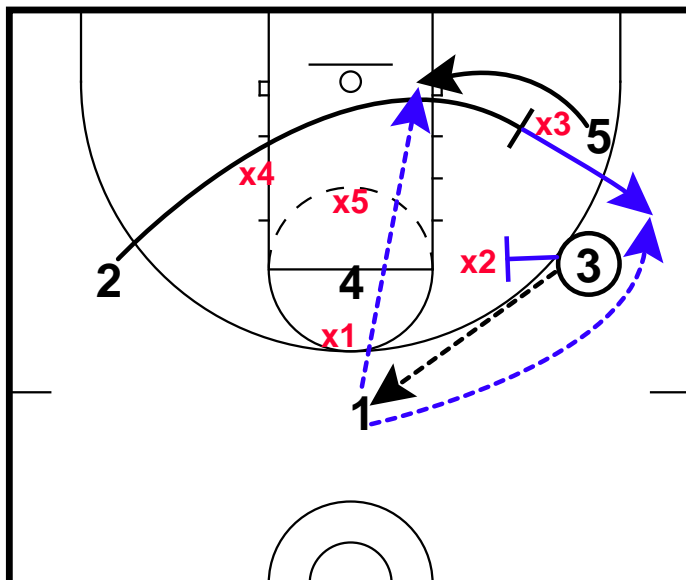
- 1 passes to 2
- 2 passes back to 1
- 4 flashes into high post

Frame 2



- 1 swings the ball to 3
- 5 cuts to the corner
- 4 follows the ball

Frame 3



- 3 passes to 1
- 2 cuts the baseline, into a back screen for 5
- 1 lobs to 5
- If 5 is not open...
- 3 screens in the zone
- 2 cuts to the wing